

Designer Secrets

Would you like to get that 'Designer Look'?

By revealing some of our Designer Secrets, we hope you can turn your interior design dreams into reality...

Designer Secret No. 1

Mood Boards and Scheme Boards

Mood boards and scheme boards are the key to styling success!

A mood board can help bring together your ideas. Use media images of what inspires you – perhaps from the world of travel, fashion or even food and drink. Think about the colours you want to use and the feel and style of the room – will it be shabby chic, classic or contemporary? Collate your images in a fun and innovative way and you will be well on the way to a successful scheme.

When you have made some choices of fabric, flooring, wall coverings, furniture and colours, you can think about producing a scheme board – which is a representation of how you would like the room to look.

If you'd like to learn more about putting a scheme together and creating beautiful scheme boards, our **Introduction to Interior Design** course is the perfect way to guide you through the design process.



Designer Secret No. 2

Neutrals – a great place to start



A neutral colour scheme is a great base to start a scheme. To add interest, you can be adventurous with texture and add an accent colour to create a bit of drama.

This colour palette is ideal as you can alter the look of your room easily; by changing the colour of your accessories.

Accessories are the key to keeping the look fresh. Have fun experimenting with different looks for different seasons.

Designer Secret No. 3

Illusions of Space

To give the feeling of height to a room, paint the walls up to the ceiling in the same colour. In a period house, you can even paint over a picture rail to help achieve this illusion of space.





Designer Secret No. 4

Success in Smaller Rooms

In a smaller space, you can afford to be brave with colour. Add drama and impact by painting the walls in a strong, bold colour – and save white and paler colours for large, airy rooms.

Designer Secret No. 5

Wonderful Walls

If you have chosen wallpaper with a large, bold design – use it only on one wall, or it could overpower a room.

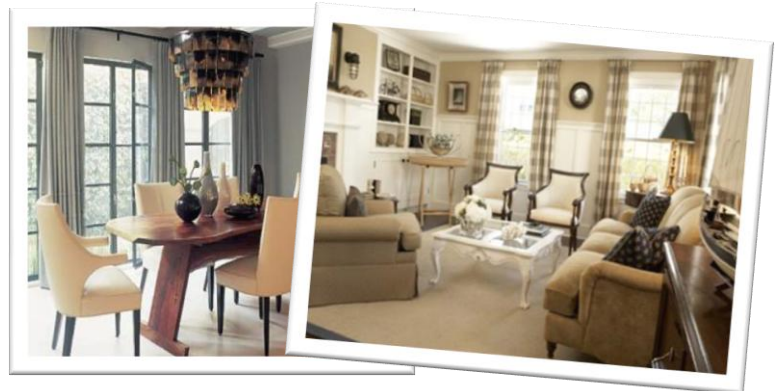
And remember - large designs can make a room feel smaller and smaller designs make a room feel larger.



Designer Secret No. 6

Mixing Woods

In interior design, wood is considered a neutral. As woods are natural and neutral in colour, mixing them together in a scheme can really add interest – so don't be scared to mix and match different types of wood.



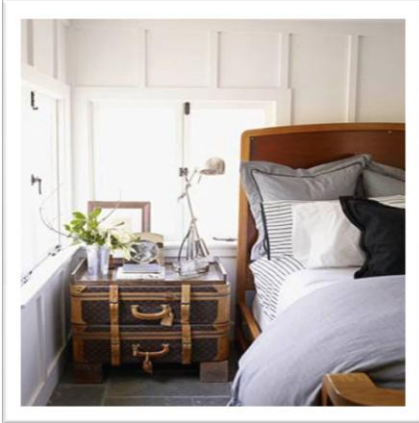
Designer Secret No. 7

Have fun!

Remember that when you are styling your own space, that it should say something about you. Have fun personalising your home or add a whimsical element to avoid a scheme looking boring.

Designer Secret No. 8

Bedside Tables



There is no rule to say that bedside tables have to match! For added interest in a bedroom scheme, you can mix your choice of bedside 'surface'.

Even a stack of vintage suitcases could create a stunning look in the right bedroom setting.

Designer Secret No. 9

Elegant Window Dressing

For a truly elegant look at your windows – always choose lined or interlined window dressings. Their soft folds will add sumptuousness to create an opulent and decadent scheme.



Designer Secret No. 10

Lighting Design

A good, well-planned lighting scheme can really enhance a room and give it that 'designer feel'.

Learn more about lighting design on one of our courses and plan accordingly – allowing for task, accent and display, general, kinetic and information lighting.